



Webinar

Accelerating Electricity Grid Deployment:

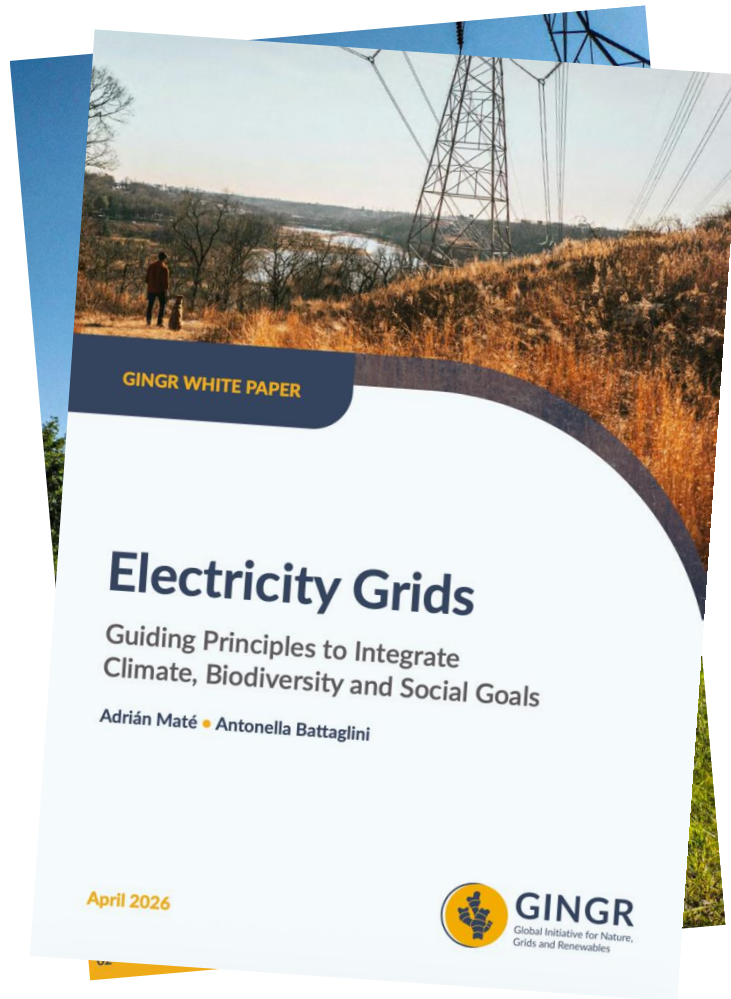
Integrating Nature and Social Goals
from the Start



2 June 2026

14:00 – 15:00 CET





Explore GINGR's latest White Paper on Guiding Principles for Grids:





The GINGR White Paper on Electricity Grids:

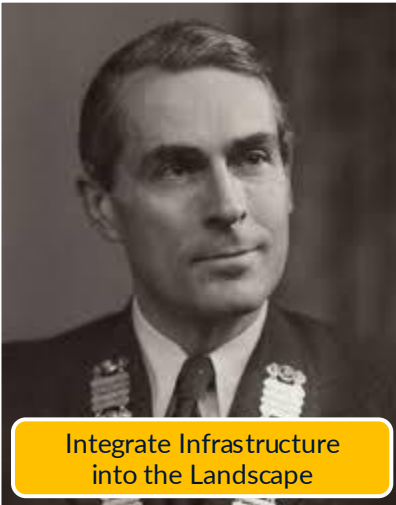
Three Guiding Principles for Nature- and People-Positive Grid Development

Adrián Maté

The evolution of 'grid thinking' through history

GRIDS

- 1 Avoid major high-amenity areas
- 2 Bypass smaller sensitive areas
- 3 Keep route direct, simple
- 4 Use natural backgrounds - hills or trees
- 5 Prefer open valleys with tree cover
- 6 Avoid forming "wirescapes" in the landscape
- 7 Use the right approach for residential / industrial areas

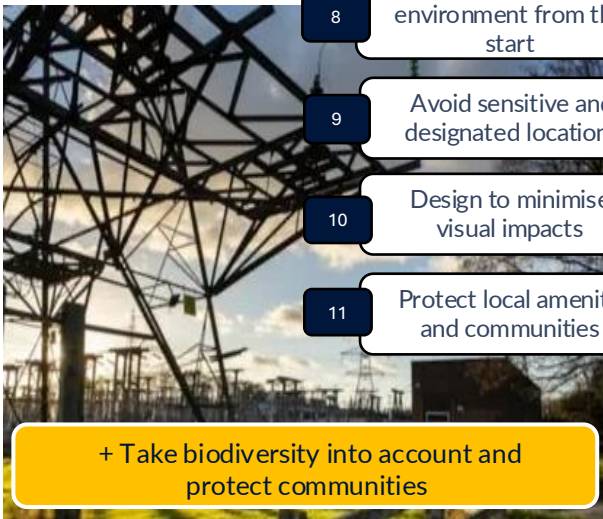


Integrate Infrastructure into the Landscape

Sir William Holford (1959)

Holford Rules (1959)

SUBSTATIONS



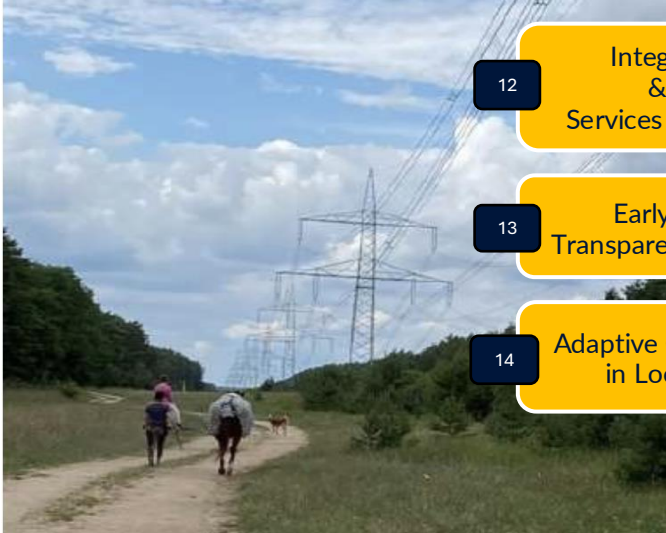
- 8 Consider the environment from the start
- 9 Avoid sensitive and designated locations
- 10 Design to minimise visual impacts
- 11 Protect local amenity and communities

+ Take biodiversity into account and protect communities

Cock Alley, Chesterfield 400kV National Grid (2024)

Holrock Rules (1992)

CORRIDORS



- 12 Integrating Ecology & Ecosystem Services Into Grid Planning
- 13 Early Engagement, Transparency and Legitimacy
- 14 Adaptive Governance Based in Local Knowledge

IVM in a 50Hertz corridor delivering positive ecosystem services

Three Guiding principles (2026)



Principle 1 : Ecology & Ecosystem Services into Grid Planning

Protect your Natural Environment

- Use Ecological Data (*i.e. species migration patterns, habitat maps, symbolic species*) as early as possible in your planning phase.
- Investing in Spatial Analysis to “design-out” socio-ecological and political resistance.
- Lowering the chance of permit denials, legal issues and last-minute changes, speeding up permitting time.

Economic Value of Ecosystem Services

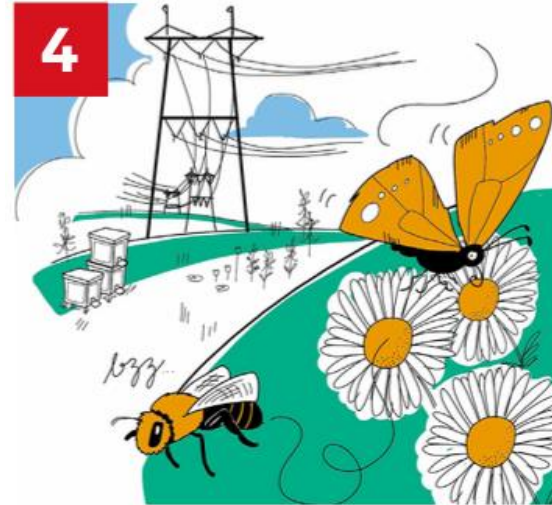
- Understand the long-term Ecological and Financial Risks
- It can reshape the Cost-Benefit Analysis of grid projects.
- Grids become Integrated Landscape Assets
- Shift in perception: from being a Constraint to becoming an Opportunity (example is IVM)

Use the Mitigation Hierarchy for analysis and decision-making.

What is the value of Ecosystem Services?



Connecting Corridors
(ecological restoration)



Pelastetaan pölyttäjät

Yli kolme neljäsosa maapallon tärkeimmistä ruokakasveista on osittain riippuvaisia eläinpölytyksestä. Ilman pölyttäjiä ruokaviljallemme puuttuisivat esimerkiksi marjat, hedelmät, monet vihannekset, piirikinä, kahvi ja kaaka. Luonnonvaraisista kukkakasveista lähes 90 % on jossain määrin riippuvaisia eläinpölytyksestä. Eläinpölytyksestä huolehtivat ensisijaisesti luonnonvaraiset lajit, mutta myös kesymehiläisillä on suuri merkitys. Tärkein pölyttäjäryhmä ovat mesipistiäiset, joita on yli 20 000 lajia. Suomessa yleisimmät pölyttäjäajit ovat tarhamehiläinen, erakkomehiläinen, kimalainen, ansoainen ja kukkakärpäset. Avoimet voimajohtojen alustat ovat oivallisia eläinpölytystä vaativien kukkivien kasvien kasvupaikkoja. Nämä säännöllisesti raivattavat alueet tarjoavat maitohorsmaitaan ja vatsukoillaan pölyttäjiä yle upean kattauksen. Alueet soveltuvat hyvin myös tarhamehiläisten pölyttäjien sijoituspaikoiksi, ja ne hyödyttävät samalla lähellä olevia pölytystä vaativia viljelemiä.

Maanomistajille
MAANOMISTAJAN IDEAKORTTI 4

FINGRID

Land-ownership
(bee-farming)



Land-Property Value
(recreation, cultural)



Principle 2 : Early Engagement, Transparency & Legitimacy

More than just *the* Social License

- Early Engagement can happen in many formats (BESTGRID) but will uncover Social, Cultural and Environmental Issues.
- It will avoid the worst thing that can happen to a project: Disengagement from Public Consultations
- Improve the Project's Credibility, Social Resilience and will speak key words: trust, inclusiveness, affordability, equity, justice

More than just Community Benefits

- Design projects with real benefits such as jobs, shared ownership, and long-term benefits
- Community Benefits are co-created with all stakeholders, acting as nodes.
- Projects are perceived as fair and beneficial when impacts are mitigated before, not after.

... political, legal and reputational risks cause delays, suspension or cancellations

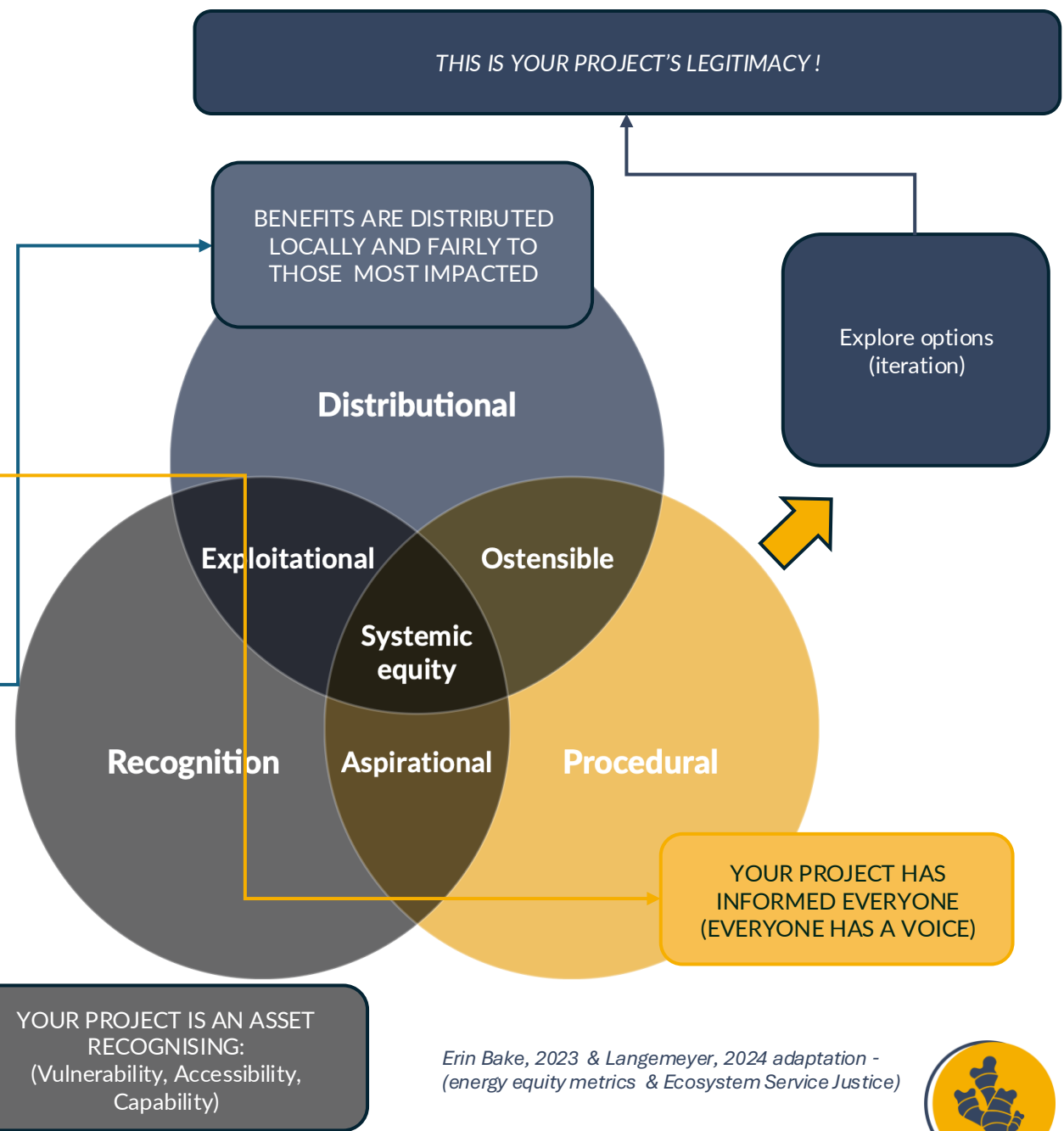


FOLLOW ECOSYSTEM SERVICE JUSTICE

1 VALUING IDENTITIES (Race, Ethnicity, Income)
VALUES KNOWLEDGE

2 STAKEHOLDERS ARE PART OF THE DECISION-MAKING

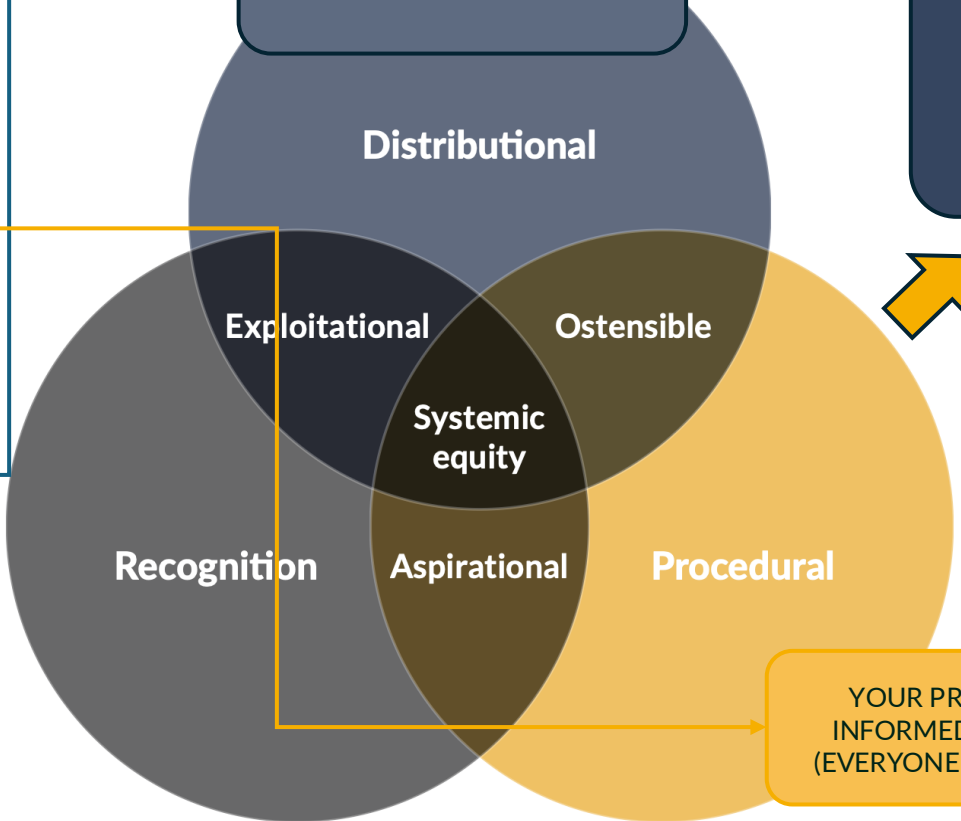
3 MAKE IT INCLUSIVE (explain decisions and trade-offs)



THIS IS YOUR PROJECT'S LEGITIMACY!

BENEFITS ARE DISTRIBUTED LOCALLY AND FAIRLY TO THOSE MOST IMPACTED

Explore options (iteration)



YOUR PROJECT HAS INFORMED EVERYONE (EVERYONE HAS A VOICE)

YOUR PROJECT IS AN ASSET RECOGNISING:
(Vulnerability, Accessibility, Capability)

Erin Bake, 2023 & Langemeyer, 2024 adaptation - (energy equity metrics & Ecosystem Service Justice)



BEFORE CONSTRUCTION

BIRD
COLLISION RISK

Low Predicted Impacts
Based on Available Data



Image by Neil Dodhia, Pixabay

AFTER COMMISIONING

MONITORING DETECTS
HIGER THAN EXPECTED MORTALITY !



Graphic by Megan Bishop, Living Bird 2018, Cornell Lab of Ornithology.

ADAPT & RESPOND



Improved Ecosystem Services



Endangered Oriental storks spotted raising chicks at Chaohu Lake in E China's Anhui for first time (People's Daily Online) May 2026



Energy Systems Grid Planning

Other Approaches

Conventional Approach

Energy Systems Grid Planning

- Meeting demand
- Achieving Net-Zero
- System reliability amid climate change
- Extreme weather and demand fluctuations
- Integrating RE capacity
- Enhancing energy security

Strategic Spatial Planning

- How land and space should be used in the future?

Does not account for Grids or Renewables but Trends are changing

(i.e. North Sea Wind Power Hub in 2024)

NOT ALWAYS DONE

Strategic Environmental Assessment

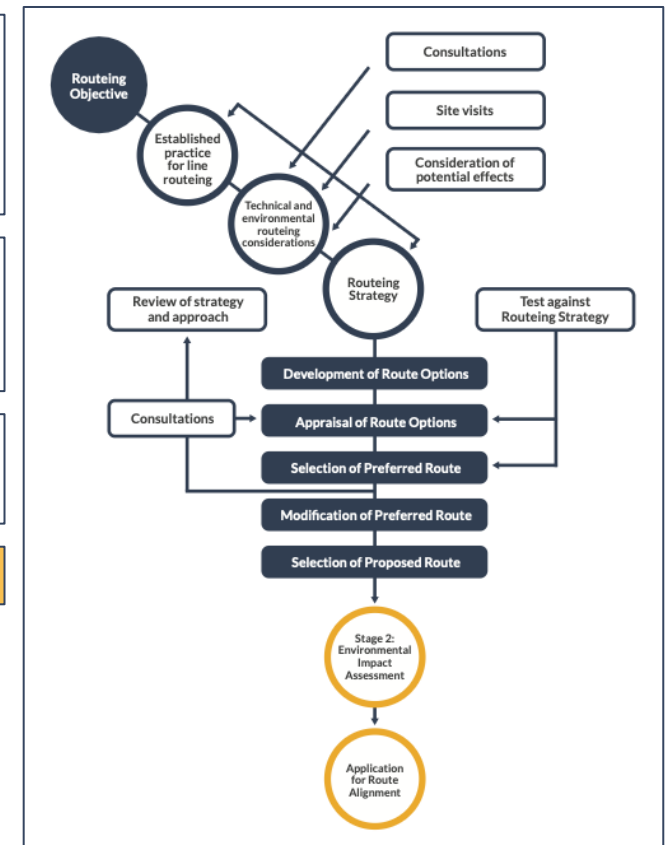
- How will the future planning of grids and renewables affect air, soil, biodiversity and climate?

- How will the future planning of grids affect society?

Ideally account for Cumulative Impacts

SOMETIMES IS DONE TOO LATE

Final Routing Assessment (EIA)



“Last but not Least”

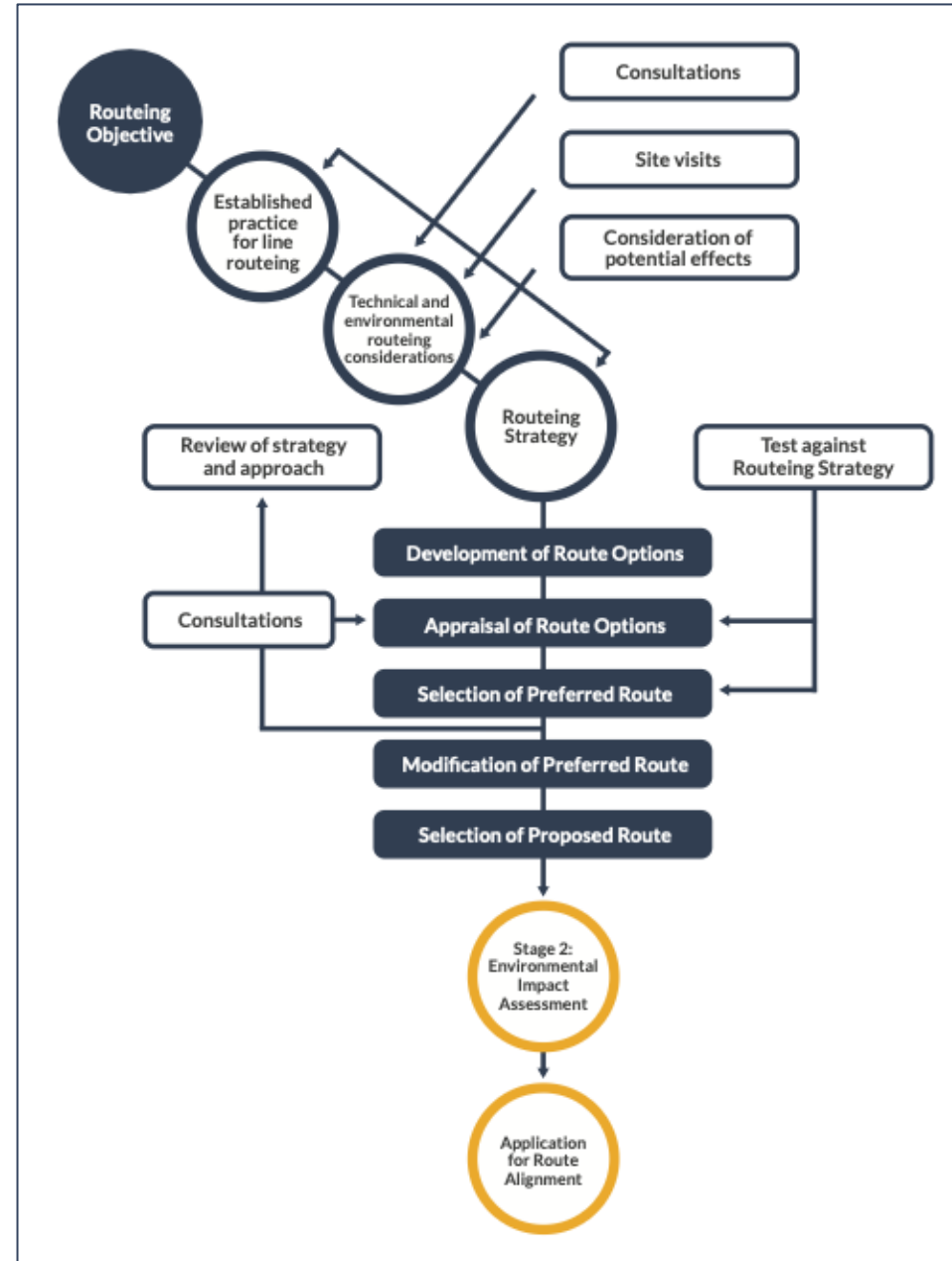
FINAL ROUTING FOR YOUR PROJECTS

Holford in Practice



DATA, MONITORING & REPORTING
(ecosystem area, integrity, sensitivity)

THE GINGR FRAMEWORK
(iterative, cross-comparable platform)



Watch our latest Webinar recordings



Civil Society Webinar | Connecting Energies 2025

Connecting Nature Finance

Understanding biodiversity credits and their role in a Nature-Positive future

Renewables Grid Initiative **7 October 2025**
10:00 - 11:30 CEST

Webinar | THE BIODIVERSITY CONSULTANCY

Beyond Compliance

Adopting a Standardised Approach to Biodiversity Reporting for a Nature-Positive Energy Transition

11 March 2026
14:00 - 15:00 CET

Civil Society Webinar | Connecting Energies 2025

Connecting Pollinator Corridors

Using evidence and monitoring to deliver a Nature-Positive grid

Dr Kimberly Russell
Associate Professor of Teaching
Rutgers University

Adrián Maté
Environmental Coordinator – GINGR
Renewables Grid Initiative

Tiina Seppänen
Senior Expert, Land Use and Environment
Fingrid

Kendall Jefferys
Postdoctoral Research Associate
University of Oxford

Renewables Grid Initiative **11 December 2025**
15:00 - 16:30 CET

Webinar | Connecting Energy, Nature & People 2026

Connecting Vegetation Management & Ecosystem Accounting in Grid Planning

Inês Cândido
Environmental Senior Manager
E-Redes

Prof. Lars Hein
Professor Ecosystem Services
Wageningen University

Sofia Vaz, PhD
Innovation Director at NBI
speaking for REN

Adrián Maté
Environmental Coordinator – GINGR
Renewables Grid Initiative

Renewables Grid Initiative **22 April 2026**
15:00 - 16:30 CEST





Webinar | Connecting Energy, Nature & People 2026

Connecting Vegetation Management & Cultural Ecosystem Services in Grid Planning

1 July 2026

15:00 - 16:30 CEST



Co-funded by
the European Union

Renewables
Grid Initiative 

