

Electricity  
Transmission

# National Grid: Integrating Climate, Nature & Social Value into Grid Development & Delivery

Cíara Taberner  
Director of Safety, Health,  
Environment and Communities

nationalgrid



# National Grid Electricity Transmission

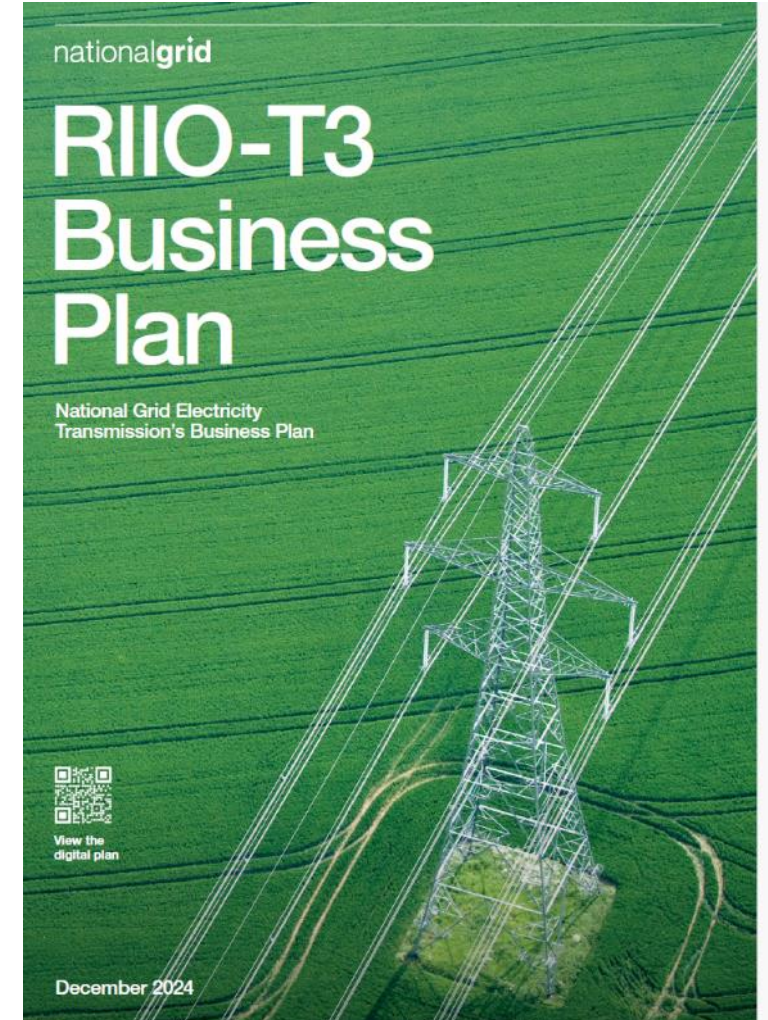


# Delivering Grid Infrastructure at Scale

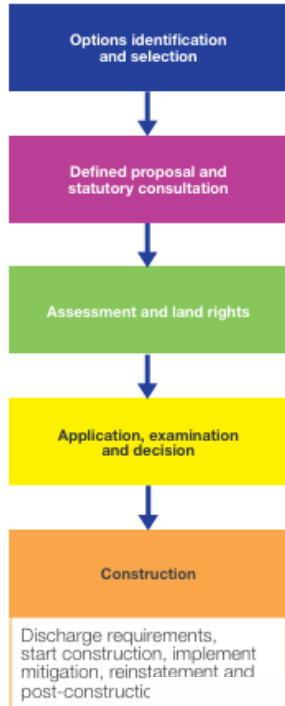
**National Grid Electricity Transmission is delivering one of the largest electricity network expansion programmes in Europe**

- ~£35bn investment to enable net zero and energy security
- Connecting **35 GW of generation** and **19 GVA of demand**
- Nearly doubling network capacity while maintaining **99.9999% reliability**

**Protecting and improving the environment is a fundamental aspect of how we will deliver our plans – for RIIO T3 our regulator has approved funding of over £1bn for environmental outcomes**

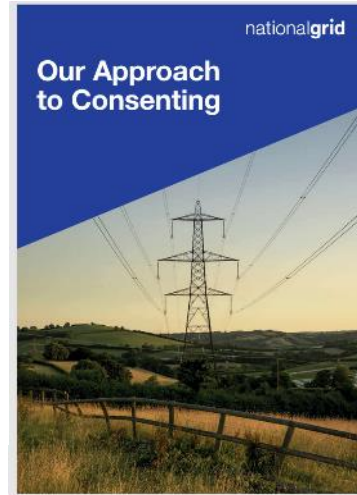


# Sustainable Network Development & Delivery



## Our Approach To Consenting

Sets out our approach to developing and delivering new infrastructure projects across our regulated electricity transmission business, including adoption of **The Holford Rules**

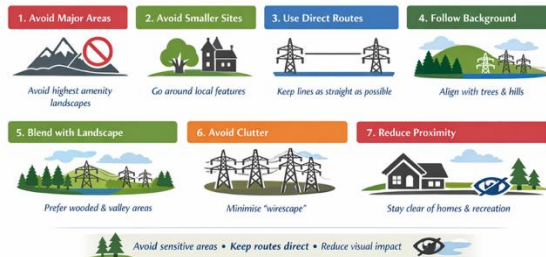


## Stakeholder community and amenity policy

- Documents our commitments under Section 38 and Schedule 9 of the Electricity Act 1989
- Includes requirements to engage with stakeholders and communities
- Routing and siting to avoid landscape and wildlife designations
- Commitments to mitigation, compensation and enhancement .

## The 7 Holford Rules

Guidelines for Routing Overhead Lines



## Social & Environmental Action Plan

- Sets out our approach to integrating environment, sustainability and social value into a single coherent framework for action
- Includes 28 commitments across 4 key pillars
- Informed through extensive stakeholder engagement and review
- A NGET Licence requirement

# Our Social & Environmental Action Plan (SEAP)

On the 22<sup>nd</sup> of April 2026, we published our **Social and Environmental Action Plan**. For the first time, we brought our environmental priorities together with social value into a single, integrated plan.

The plan is structured around four strategic pillars:

- **Climate action** – accelerating progress towards net zero and reducing emissions across our operations and supply chain
- **Nature positive** – protecting, restoring and enhancing the natural environment
- **One planet living** – operating within planetary limits through responsible resource use
- **Social value** – delivering fair, lasting benefits for communities, jobs, skills and local supply chains



# Social & Environmental Action Plan (SEAP)

28 commitments across four pillars, each with annual milestones (FY27–FY31):



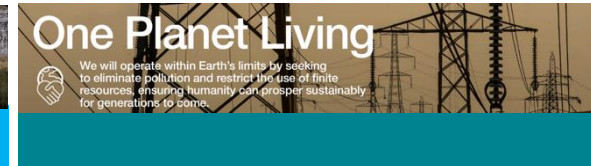
## 7 commitments:

Inc minimum 10% Biodiversity Net Gain, measurable contributions to local nature recovery and marine restoration, TNFD-aligned disclosure, and nature connectivity corridors across our linear network.



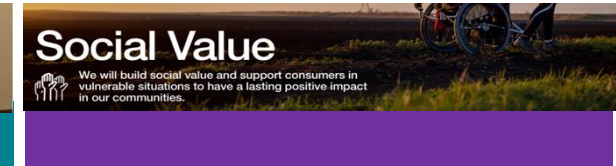
## 11 commitments:

covering scope 1 & 2 emissions reduction, SF<sub>6</sub> phase-down, zero-emission fleet, low-carbon construction materials (50% low-emission steel and concrete by 2030), and 80% of suppliers committed to Science Based Targets by 2031.



## 7 commitments:

zero avoidable waste in construction, increased recycled content, circular economy maturity aligned to BS8001, material passports, water footprint assessment, and certified environmental management.



## 3 priorities:

9 outcome areas:

Accelerating social mobility and STEM skills, improving access for SMEs and VCSEs, and delivering lasting community legacy including dedicated Community Funds.

- An Annual Social and Environmental Impact Report (ASER) will be published from October 2027, with progress reported annually to Ofgem.
- The SEAP operates as a living plan, updated each year in response to stakeholder feedback, policy changes, and emerging science.



# National Grid Alignment to GINGR Principles

## PRINCIPLE 2 Early Engagement, Transparency & Legitimacy

### NGET Alignment

- Stakeholder consultation begins at options identification stage, with community input actively shaping corridors, technology choices and design decisions
- Online engagement for major projects with interactive maps and regular newsletter updates
- Engagement also covers eNGO's and other local groups, and our Carbon and Nature Framework set up in 2025 enables us to partner with them to deliver effective mitigation and enhancement
- SEAP integrates social value commitments into delivery, ensuring community benefits, local jobs and diverse supply chain investment are embedded in project outcomes



Home > The Great Grid Upgrade

### April 2026 Update

Following the close of our Stage 1 consultation in summer 2025, we are now taking the time to carefully consider all feedback you shared with us. As part of our Stage 2 consultation, planned for 2026, we will present our refined proposals along with a feedback report setting out how we have responded to the issues raised and how the feedback we received has influenced the development of the project design.

Alongside our feedback review, we are conducting ecological and environmental surveys to gather important data about the local environment to inform our proposals.

The parishes we expect to be in over the next week are:

Ingoldsby, Blitchfield and Bassingthorpe, Swayfield, South Kesteven, Stratton, Castle Bytham, Market Overton, Teigh, Gunby and Stainby, Thistleton, Surfleet, Gosberton, Billingborough, Dunsby, South Witham, Buckminster, Garthorpe, Earls Barton and Great Doddington.

### View our proposals

You can view our proposals on our interactive map here, which shows our proposals as a whole and by route section.



# National Grid Alignment to GINGR Principles

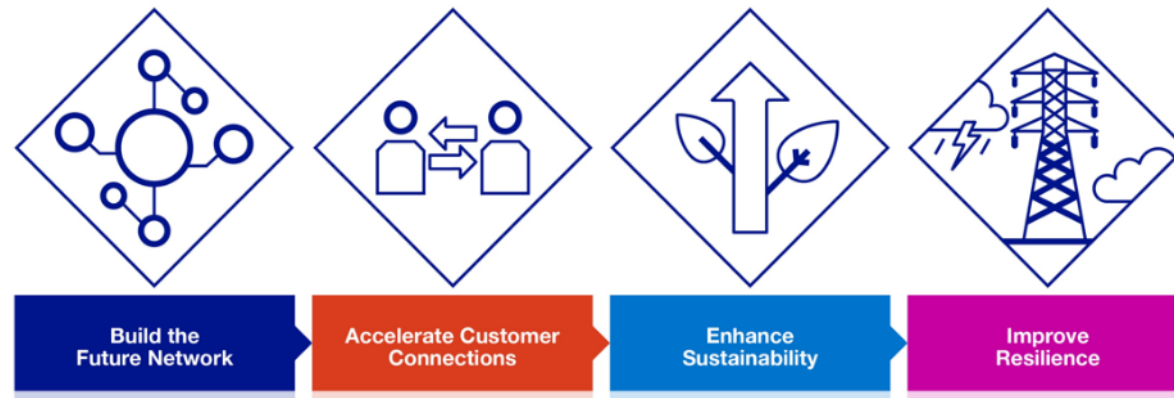
## PRINCIPLE 3 Adaptive Governance & Learning Systems

### NGET Alignment

- SEAP operates as a living plan, iteratively updated in response to stakeholder feedback, policy changes and emerging science
- Sustainability data-driven reporting with measurable outcomes (BNG, emissions, social value metrics) supports accountability and continuous improvement across the network
- T3 innovation funding of £xx for the T3 period with focus within NGET on Network Sustainability and Resilience



### Our Innovation Strategy – Focus Areas



# Summary

- **Delivering at scale** — ~£35bn investment to enable net zero and energy security, nearly doubling network capacity. How we build is now as critical as what we build.
- **Climate, Nature & Communities embedded throughout** — Sustainability is integrated across the full development lifecycle, from early planning and route selection through to construction and operation.
- **SEAP as the delivery framework** — 28 commitments across four pillars (Climate Action, Nature Positive, One Planet Living, Social Value) in a single integrated plan, built into key contracts.
- **Nature-positive by design** — Minimum 10% BNG, nature connectivity corridors, and avoidance-led route selection turns grid infrastructure into an opportunity for ecological enhancement.
- **Communities and social licence at the centre** — Early engagement, transparent decision-making, and lasting investment in skills, jobs and local supply chains build trust and enable delivery at pace.
- **Aligned with GINGR Principles** — Strong alignment across all three principles: ecological integration, stakeholder legitimacy and adaptive governance, with opportunities to strengthen further.

nationalgrid