



Webinar

Accelerating Electricity Grid Deployment:

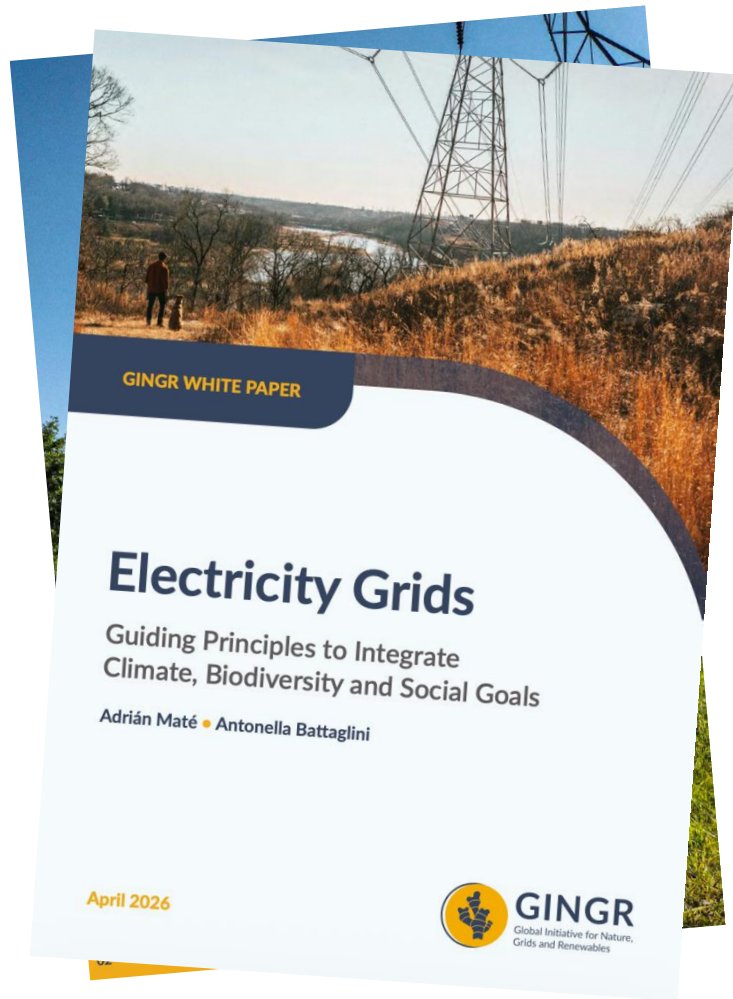
Integrating Nature and Social Goals
from the Start



2 June 2026

14:00 – 15:00 CET





Explore GINGR's latest White Paper on Guiding Principles for Grids:





Why Grids are Central to the Energy Transition

Antonella Battaglini

About the Renewables Grid Initiative

RGI is a unique collaboration of NGOs and TSOs from across Europe engaging in an 'energy transition ecosystem-of-actors'. We promote **fair, transparent, sustainable grid development** to enable the growth of renewables to achieve full decarbonisation in line with the Paris Agreement.

TRANSMISSION SYSTEM OPERATORS (TSOS)



Renewables
Grid Initiative

NON-GOVERNMENTAL ORGANISATIONS (NGOS)



SUPPORTING MEMBERS



Global Initiative for Nature, Grids, & Renewables

We envision a rapid energy transition enabled by wind, solar and electricity grids that embraces Nature- and People-Positive goals.

gingr.org



Our Mission

GINGR aims to support the just and sustainable energy transition by providing assessment tools to quantify contributions to Nature- and People-Positive goals.

To facilitate this, we intend to develop monitoring and reporting systems that are globally aligned and standardised.

an initiative by

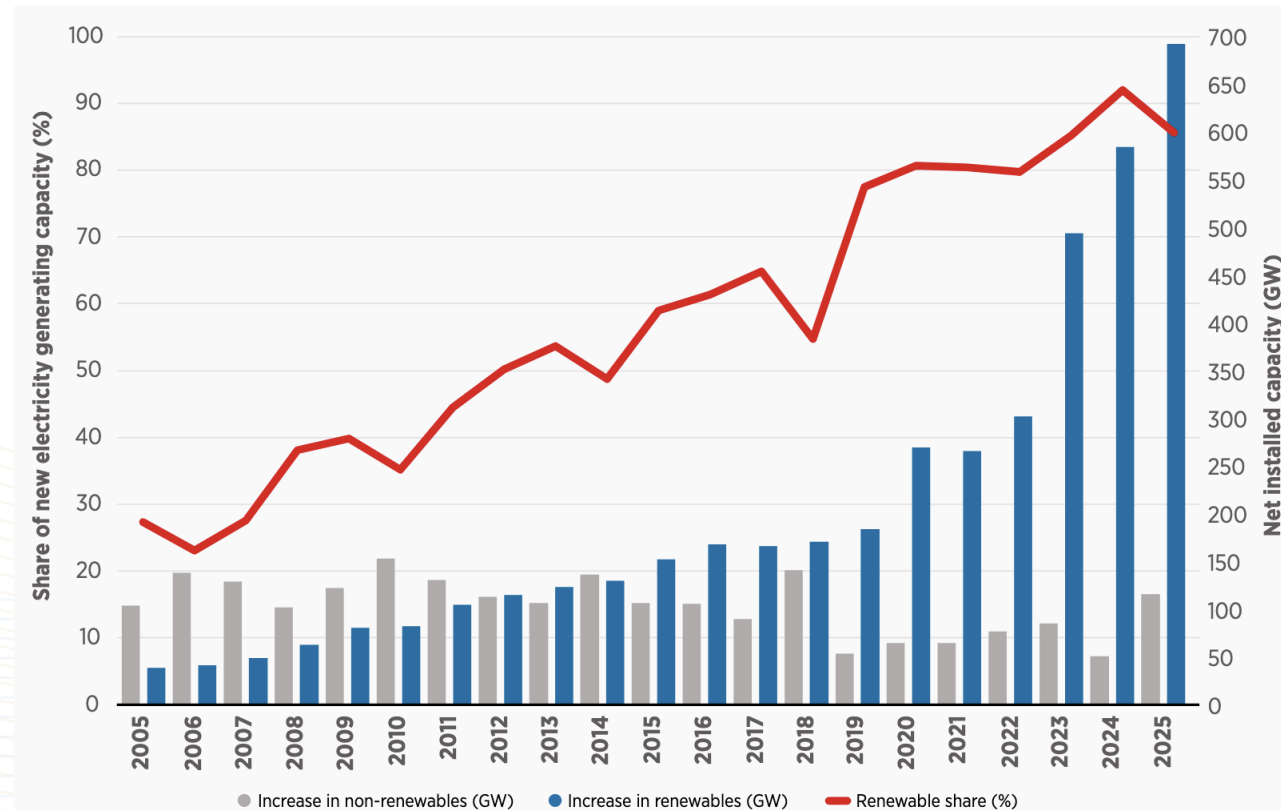


A Rapid Energy Transition is Already Underway

“2025 marks the highest annual increase in renewable generation capacity to date and the highest growth on record in percentage terms.”

However,
renewables only work if
electricity can move!

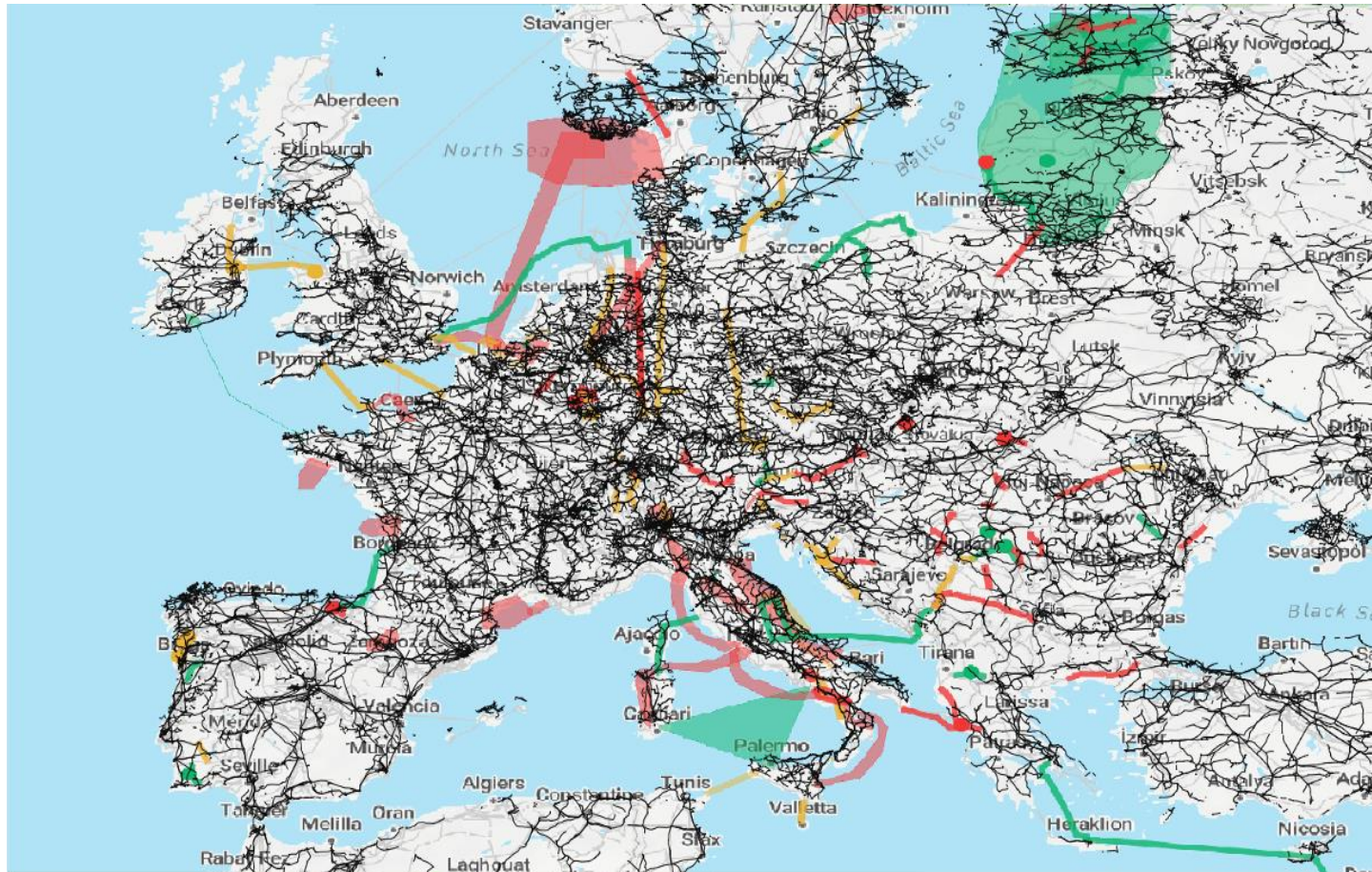
RENEWABLE SHARE OF ANNUAL POWER CAPACITY EXPANSION



Source: IRENA Renewable capacity highlights 2025



The Next Challenge: Expanding the Grids



- More renewable electricity.
- More electrification.
- More transmission infrastructure.
- Grids as the backbone of the transition.
- Permitting and acceptance challenges.

How to expand?

Source: <https://mapyourgrid.org/global-grid-data/>



Challenges that Project Developers face Today



Long and complex permitting procedures

Balancing energy infrastructure needs with biodiversity protection



Addressing community concerns and maintaining social acceptance



Limited ecological and socio-economic data for informed decision-making



Managing competing land-use interests and cumulative impacts



Demonstrating measurable environmental and social benefits



Planning Grids with Nature and People in Mind

- ✓ Infrastructure siting is key, across land and sea.
- ✓ Early planning reduces conflict and can accelerate deployment.
- ✓ Biodiversity data and monitoring are essential.
- ✓ Infrastructure corridors can support ecosystems.
- ✓ Communities need to see benefits.



Grids must become Nature- and People-Positive.

